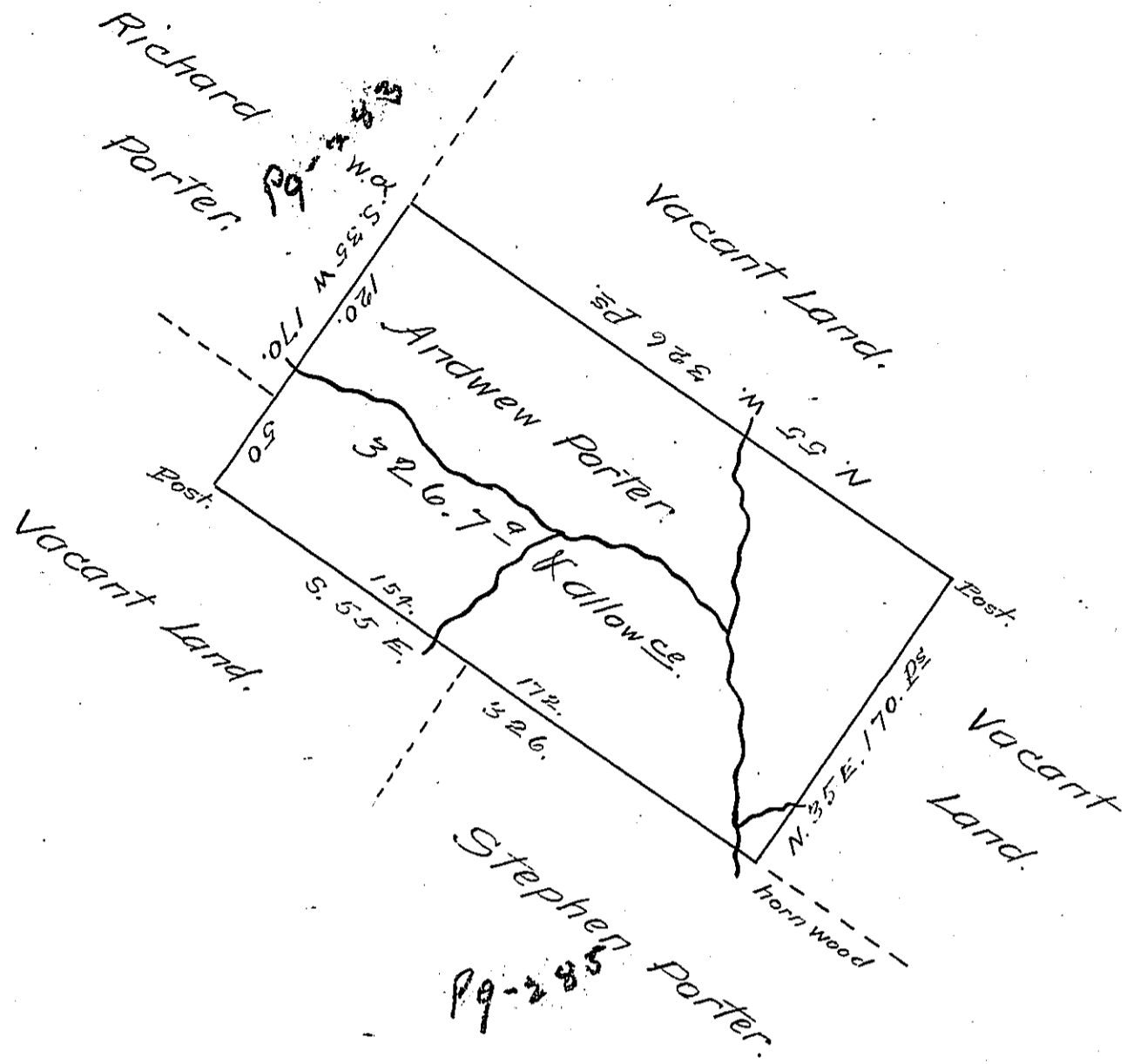


FORM No. 1.



SURVEY'd to Andrew Porter on the 13th Day of October 1773 the above described Tract of Land containing three hundred twenty six Acres & three Quarters of an acre & the usual Allowance of six & Ct. — Situate on the North Side of Crooked Creek including a branch of said Creek & adjoining Richard Porter in the County of Westmorland — By Warrant of the 23^d. Day of July 1773.

J. Joshua Elder D.S.

To John Lukens Esq. S. Genl.

IN TESTIMONY that the above is a copy of the original remaining on file in the Department of Internal Affairs of Pennsylvania, made conformably to an Act of Assembly approved the 16th day of February, 1833, I have hereunto set my Hand and caused the Seal of said Department to be affixed at Harrisburg, this Twenty third day of April 1906.

James D. [Signature]
Secretary of Internal Affairs.